

EST.  1857

ST. JAMES'S

HOTEL & CLUB MAYFAIR



Where WE ARE LOCATED



St. James's Hotel and Club 7-8 Park Place St. James's London SW1A 1LS

- London City Airport 10.9 miles, 30min by car
- Heathrow Airport 15.8 miles, 40min by car or tube
- Gatwick Airport 33.5 miles, 1 hr by Gatwick Express Train

Althoff
COLLECTION



ST. JAMES'S
HOTEL & CLUB MAYFAIR


THE LEADING HOTELS
OF THE WORLD

Why TO STAY WITH US



Situated on a peaceful street in the glamorous St. James's area with easy access to transport.

- Modern British Cuisine restaurant, Francatelli, led by award winning chef William Drabble.
- Rooms and suites are individually designed with some offering private terraces/ balconies. All bedrooms feature bespoke mattresses from Hypnos
- A carefully appointed and original art collection features throughout the hotel with 300 unique pieces from the 1920's to the 1940's

Althoff
COLLECTION

EST.  1857
ST. JAMES'S
HOTEL & CLUB MAYFAIR


THE LEADING HOTELS
OF THE WORLD

Our

ACCOMMODATION



60 rooms and suites, including:

- 22 Superior Rooms: queen-size bed
- 21 Deluxe Rooms: king-size bed or twin (available on request), some with a balcony.
- 7 Executive Rooms: king-size bed or 4-poster bed, some of the rooms have a balcony or alcove
- 4 Junior Suites: separate bedroom with king-size bed, living room and spacious bathroom

Althoff
COLLECTION



ST. JAMES'S
HOTEL & CLUB MAYFAIR


THE LEADING HOTELS
OF THE WORLD

Our

ACCOMMODATION



- **3 Deluxe Suites:** separate bedroom with king-size bed, living room and spacious bathroom
- **1 Terrace Suite:** separate bedroom with king-size bed or twin beds, living room, spacious bathroom and a private terrace
- **1 Westminster Suite:** separate bedroom with king-size bed or twin beds, living room, spacious bathroom, private lift and a rooftop terrace
- **1 St. James's Suite:** separate bedroom with king-size bed or twin beds, living room with fire place, dining area, spacious bathroom and private lift

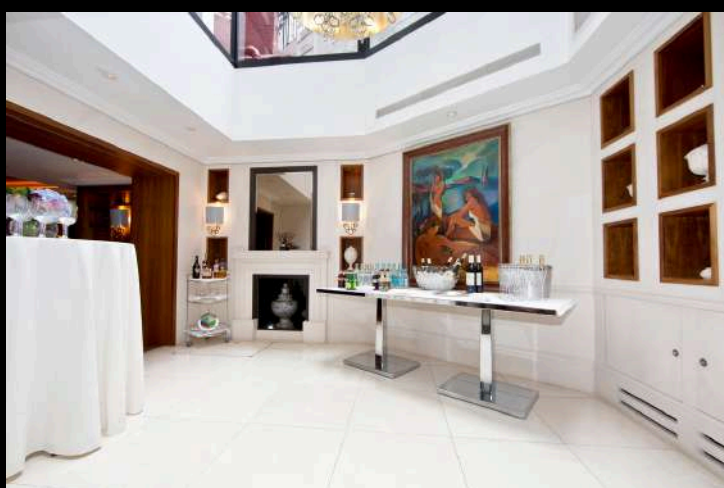
Althoff
COLLECTION



ST. JAMES'S
HOTEL & CLUB MAYFAIR

THE LEADING HOTELS
OF THE WORLD

Private ROOMS



Capacities	Boardroom	Classroom	Theatre	U-Shape	Private Dining	Reception	Cabaret
The Mayfair Suite	24 (22 if need presentation)	18	40	18	30	50	16 (4pax per table)
The Granville	8	-	-	-	8	20	-
The Wellington Boardroom	6	-	-	-	8	-	-
The Library	12 - 13	-	-	-	12 - 14	-	-
Entire Floor	-	-	-	-	-	70	-
Penthouse	-	-	-	-	-	-	-

Althoff
COLLECTION



ST. JAMES'S
HOTEL & CLUB MAYFAIR

THE LEADING HOTELS
OF THE WORLD

Our FACILITIES



- Frencatelli Restaurant by William Drabble
- Seven Park Place Bar & Lounge
- 4 event rooms with the latest technology and some offering natural daylight. Outside meeting space is available on a private rooftop terrace
- Penthouse Suite with rooftop terrace on 7th floor
- 24 hour concierge service
- 24 hour room service
- Access to gym nearby
- Direct access to Green Park
- Complimentary WiFi throughout the hotel

Althoff
COLLECTION



ST. JAMES'S
HOTEL & CLUB MAYFAIR


THE LEADING HOTELS
OF THE WORLD

What TO DO



- Walking in the Royal Parks, including Hyde Park, Green Park and St. James's and visiting nearby sites such as Buckingham Palace
- Shopping at the designer shops and stylish boutiques of Bond Street, Regent Street and the Burlington Arcade
- Visit the famous Royal Academy of Arts
- Enjoy a West End show at the nearby theatre

Althoff
COLLECTION



ST. JAMES'S
HOTEL & CLUB MAYFAIR


THE LEADING HOTELS
OF THE WORLD

EST.  1857

ST. JAMES'S

HOTEL & CLUB MAYFAIR

